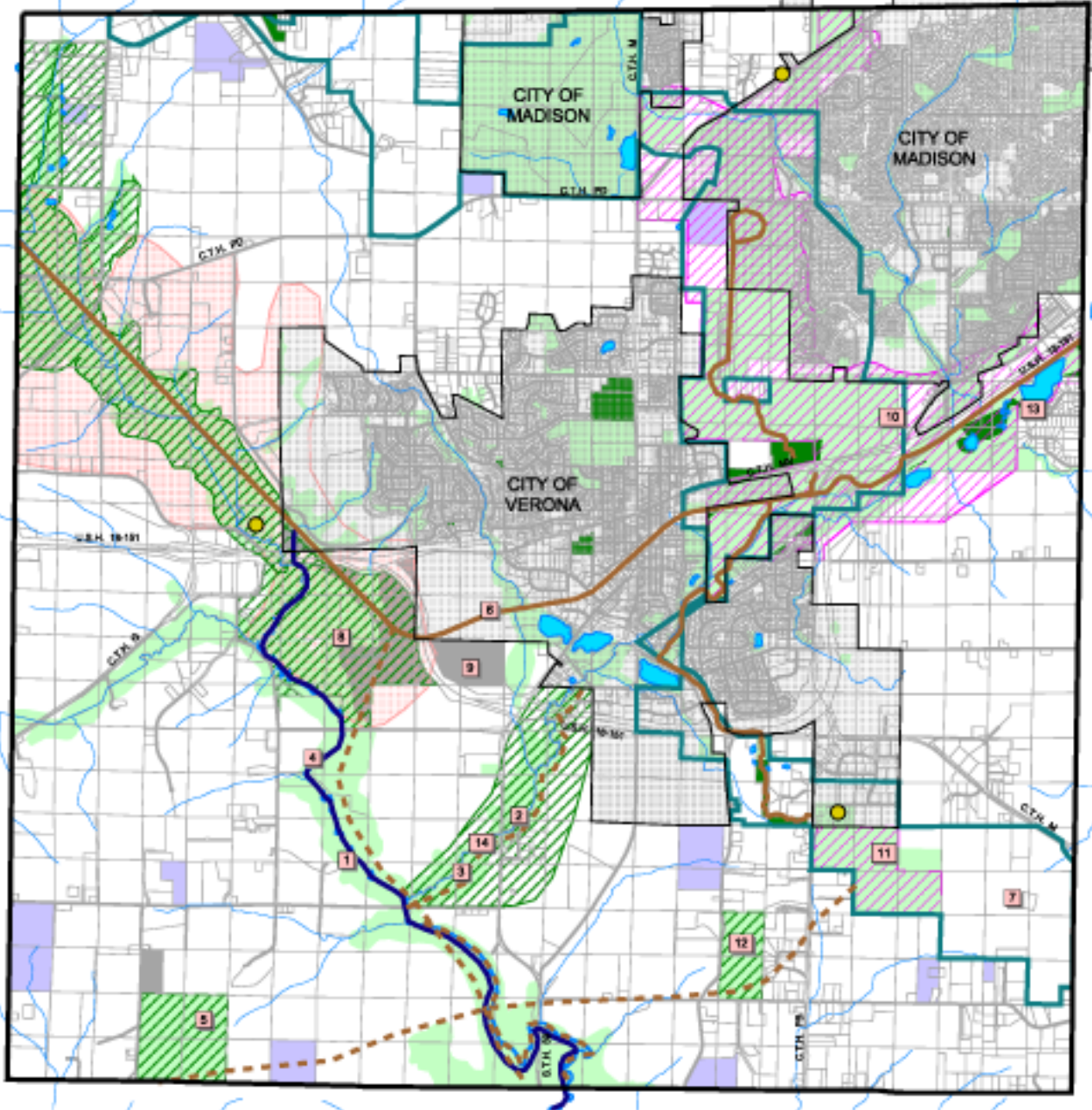


Open Space and Parks Map (May 2006)

Town of Verona

Dane County, Wisconsin

DRAFT



Public Lands

- Recreation Parks
- Local, State, and Federal Lands

Natural Resources

- County Natural Resources Study Area
- County Natural Resources Site
- Grassland/Prairie Management Area
- Managed Forest
- Native Prairie Remnants and Oak Savannas

Trails (Land and Water)

- Proposed Trails
- Existing Trails
- Existing Water Trails
- Ice Age Trail Corridor

Note:

Water Trails have landing sites at County View Road, Valley Road, and Riverside Road.

Many parcels near or adjacent to the Upper Sugar River Open Space Corridor are high priority for conservation and may be eligible for grant funding.

This map was created using the Dane County Parks and Open Space Plan 2001-2020 as the foundation.

Regional Development Plan

- Municipalities
- Open Space Corridor

Points of Interest

1. Upper Sugar River
2. Badger Mill Creek
3. Badger Mill Creek Resource Area
4. Upper Sugar River Canoe Trail
5. Madison School Forest
6. Military Ridge State Trail
7. Ice Age Trail Corridor
8. DNR Lands
9. DOT Lands
10. Badger Prairie County Park
11. Prairie Monks County Park
12. Schedelger County Forest
13. Goose Lake Open Space Area
14. Proposed County Park



2000 0 2000 4000 6000 Feet

