

Public Works Committee Agenda

Tuesday January 23, 2024 - 7:00 AM

Town of Verona Hall, 7669 County Highway PD

1. Call to Order/Additions to Agenda/Approve Agenda
2. Action: Review Minutes of December 19, 2023
3. Discussion and Possible Action: Boom Mower/ Tractor acquisition **(20 Minutes)**
4. Discussion and Possible Action: Draft Road maintenance agreement with the Town of Middleton **(10 minutes)**
5. Discussion 2024 Capital Improvement Program **(10 minutes)**
6. Discussion and Possible Action: Town generated right of way brush disposal **(10 Minutes)**
7. **Information:** Fitchrona Road Design Engineering Intergovernmental Agreement
8. Information: Madison Metropolitan Sewerage District Pump Station 17 and Force Relief Sewer **(10 minutes)**
9. Information: Country View Road and County Highway PD widening/relocation **(5 Minutes)**
10. Development Updates: **(5 minutes)**
 - a. Riverside Heights Development
11. Equipment Condition Update **(5 minutes)**
12. Schedule February Committee Meeting and set agenda items
13. Adjourn

To receive agendas and other announcements by email, use the "alert notifications" feature on the Town website at <http://www.town.verona.wi.us/>.

If anyone having a qualifying disability as defined by the American With Disabilities Act, needs an interpreter, materials in alternate formats or other accommodations to access these meetings, please contact the Town of Verona Clerk's office @ 608-845-7187 or twithe@town.verona.wi.us Please do so at least 48 hours prior to the meeting so that proper arrangements can be made.

Notice is also given of a possible quorum of the Plan Commission and /or the Town of Verona Board could occur at this meeting for the purposes of gathering information only.

Public Works Committee Minutes

Tuesday December 19, 2023 - 7:00 AM

Town of Verona Hall, 7669 County Highway PD

Present: Mike Duerst - Chair, Manfred Enburg, Brett Lindell, John Senseman

Absent: Russ Swiggum

Also Present: Christopher Barnes - Public Works Director, Mark Judd - Patrolman

Public Present: None

Call to Order/Additions to Agenda/Approve Agenda - Chair Duerst called the meeting to order at 7:00

1. **AM.** Duerst asked for additions and approval of the agenda. Enburg moved to accept the agenda, seconded by Senseman, motion carried.
2. **Action: Review Minutes of November 21** - The minutes were reviewed by the committee. Enburg moved to approve the minutes as submitted, second by Senseman, motion carried.
3. **Discussion and possible Action: Equipment fund expenditure for Boom Mower/ Tractor** Duerst asked Barnes to explain the information in the agenda packet. Barnes stated that he quantified the usage and comparison between a rental and purchase of a tractor Boom Mower. Barnes estimated about 200 hours of usage a week instead of the 40 hours that the town currently rents. Barnes stated that based on the optimum usage, the pay back of a tractor/mower is about 6-7 years. Duerst explained that he believed the best time to use the mower was in the winter without snowplowing. He states that he was looking for tractors into 140 horsepower range. Discussion followed. Enburg mentioned that the difficulty of finding labor to do hand brush cutting and that a mower would be able to reduce the need of hand labor. Sensemen asked about specific tractor mower combinations and the difference between the different sizes of t tractors and what type of warranty was typical. Lindel suggested that the that committee recommend to the board a range of costs for a tactor mower purchase. Duerst asked about renting the equipment to other townships? Barnes stated he was not n favor of renting out initially. Enburg asked about obtaining quotes for doing right of way clearing and brushing from private companies. Discussion followed. Sensemen asked that Barnes price out new tractor mower combination.
4. **Information: Discontinuance of Hidden River Road (South) and Sugar Ridge** Barnes explained that he needed to restart the discontinuance of Hidden River South since the term "introduced" to the town board entails the passing of a resolution and not just an informational item. Barnes state that one property owner (Tom Poast) was at the meeting and asked a couple question about the timing o the vacation and Barnes is to respond to him. Given the new schedule, the discontinuance of hidden River will be scheduled or the February board meeting. The owners on Sugar Ridge have decided to delay the discontinuance until a future time.
- 5.
6. **Information: Madison Metropolitan Sewerage District Pump Station 17 and Force Relief Sewer:** Barnes states that the the work on the gravity sewer was under way. And would begin near the Military Ridge Trail.
7. **Information: Country View Road and County Highway PD widening/relocation:** Barnes State that work was shut down for the winter and the next phase of conduction would be the construction Country View Road for the north end to approximately the location the former community gardens.
8. **Development Updates:**
 - a. Riverside Heights Development:

Duerst stated that Board reviewed the memo submitted by the public works committee and chose to approve the conceptual plan without an easement of a future road extension to the north.

9. **Equipment Condition Update-** Judd stated that the new ford F-550 had been received and was ready for use. Discussion about h disposition of the 2015 Ford was to use the Wisconsin Surplus to sell the vehicle. Duerst asked what would be a good price to put on the 2015 Ford truck? Judd stated that he thought \$45,000 was a good minimum bid. for a sale. Barnes stated that he would like to hold on to the 2015 truck for a while until the new truck is settled in. Judd stated there were no other equipment issues.

10. **Schedule next Committee Meeting and set agenda items:** The December meeting was set for December 16, 2023 at 7:00 AM.

11. **Other Items:** Enburg asked about the item in the agenda about PASER ratings. Barnes explained that he compiled the average road rating thought out the town and uses this list as an overall gauge of road pavement ratings. The average town road had increased slightly since 2019. Sensemen asked what a good target would be. Barnes stated that he though a PASER rating of 6.5 was reasonable.

Sensemen asked about the Fitchrona Road public informational Meeting and the neighborhood response. Barnes state his opinion is that the neighbors are resigned to the widening. Duerst asked about the "historical" trees at the intersection of Lacy Road. Barnes state that he had engaged Bruce Allision to perform an analysis of trees and any known history and no evidence of an historical features were uncovered.

12. **Adjourn** - Motion by Enburg, second by Lindell to adjourn at 8:27 AM.

Approved: January 23, 2024

Prepared By: W. Christopher Barnes

Boom Mower Price Quotes

1/18/2024

Requested Specifications for new unit

New Tractor/Mower Unit

Tractor

Mower

4-wheel Drive

21- or 22-foot arm

nominal 120 HP engine

Tiger or Diamond

Cab/ Cage

48" deck

	Vendor		
	Weyers Equipment	Riester&Schnell	Serwe Implement
Tractor	Case/IH Maxxum 115	John Deere 61110MC	John Deere 6145M
Mower	Alamo	Diamond	Tiger
Total Quote	\$195,000.00	\$181,120.00	\$253,737.00

includes complete
outfitting equipment
and assembly

Used Tractor/Mower Unit

	Vendor			
	Riester&Schnell	Serwe Implement	Serwe Implement	Serwe Implement
Tractor	John Deere 6105E	John Deere 6420	Case IH Maxxum 115	John Deere 6410
Mower	Diamond	Alamo	Tiger	Tiger
Total Quote	\$152,500.00	\$95,000.00	\$60,000.00	\$52,000.00



Selling Equipment



Quote Id: 30228071

2023 JOHN DEERE 6110M/6110MC/6110RC TRACTOR - 1L06110MCPG187526		
Hours:	130	
Stock Number:		
Code	Description	Qty
4227L	2023 JOHN DEERE 6110M/6110MC/6110RC TRACTOR	1
Standard Options - Per Unit		
	Tire Width: Mid	1
	Rear PTO: 540/1000	1
	MFWD	1
	Partial Power Shift	1
	Cab	1
	Configuration: Standard	1
Other Charges		
	Setup	1

DIAMOND MOWERS BOOM MOWER (22') - 44576		
Hours:	0	
Stock Number:	130803	
Code	Description	Qty
---	DIAMOND MOWERS BOOM MOWER (22')	1
Standard Options - Per Unit		
25-2033	DBR060-H HYD TRAP TRI-HEX DISC BRUSH BLADES	1
60-8799	22' REAR CRADLE BOOM	1
Other Charges		
	Setup	1
	Delivery	1

Confidential

Extended Repair Plan Proposal
PowerGard™ Protection Plan Residential

Date : January 15, 2024			
Machine/Use Information		Plan Description	Price
Manufacturer	JOHN DEERE	Plan Type:	Deductible:
Equipment Type	6110M/6110MC/6 110RC TRACTOR	Coverage:	Quoted Price \$ 0.00
Model	6110M/6110MC/6 110RC TRACTOR	Total Months:	
		Total Hours:	

THIS PROPOSAL IS VALID FOR 30-DAYS FROM DATE ISSUED. GRACE pricing is offered only early during the Deere basic warranty period and has no surcharges. After this period, DELAYED PURCHASE pricing (surcharged) is offered later during the John Deere Basic Warranty. Many PowerGard quotes presented in the Delayed Purchase Period will require inspection/certification process and must also past fluid testing. The Total Months and Total Hours listed above include the John Deere Basic Warranty terms (24 months / 2000 hours on Tractors, 24 months on Golf & Turf Products, 12 months for all AG Harvesting and Sprayer equipment, and 12 months/1000 hours on most Gator Utility Vehicles)."Limited" Plan coverage = Engine & Powertrain only. "Comprehensive" Plan coverage = Full Machine.

Proposal Prepared for:
I have been offered this coverage and

 Customer Name - Please Print

 I ACCEPT the Residential plan

 I DECLINE the Residential plan

 Customer Signature

If declined, I fully understand that my equipment listed above is not covered for repair expenses due to component failures beyond the original basic warranty period provided by John Deere.

Note : This is not a contract. For specific PowerGard™ Protection plan Residential coverage, please refer to the terms and conditions on John Deere's public website(www.JohnDeere.com) under Services & Support >Warranty > Extended Warranties > PowerGard protection plan Residential.

PowerGard™ Protection Plan Residential (Residential plan) is:

The PowerGard™ Protection Plan Residential is an extended repair plan that provides parts and labor coverage up to four years beyond the manufacturer's warranty. It is available on all riding lawn equipment, zero-turn radius mowers, utility vehicles, utility tractors and compact utility tractors. Your John Deere equipment will be in the hands of qualified, certified technicians from John Deere dealers using Genuine John Deere Parts.

Not covered under a Residential plan:

Residential plans do not cover routine maintenance services or items normally designed to be replaced by the purchaser due to normal wear and tear. They do not cover any product used for commercial or rental applications. They also do not cover repairs for damage from accident, misuse, fire, theft, or exposure to weather conditions such as lightning, hail, flood or water. See the actual PowerGard™ Protection Plan Residential Terms and Conditions for a complete listing of coverage, and limitations and conditions under the program.



INDUSTRIAL EQUIPMENT
COMMERCIAL LANDSCAPE EQUIPMENT
FARM EQUIPMENT

Alamo, Anchor, Belgard, Case, Cub Cadet, Exmark, Gehl,
Pro Green Plus, Redmax, Ryan, Tanaka, Versa-Lok, Wacker

N1957 EAST FRONTAGE ROAD * KAUKAUNA WI 54130-0259 * 920/766-1861 * TOLL FREE 1/877-WEYERS EQ. (939-3773) WI & MI Only
Fax 920/766-1837 * E-Mail since1923@weversequip.com * Web Site <http://www.weversequip.com>

TOWN OF VERONA

CASE IH MAXXUM 115.....\$ 95,000

ALAMO MACHETE 3 25FT BOOM W/60" ROTARY HEAD W/SWIVEL.....\$ 100,000

TOTAL: \$ 195,000

PRICE INCLUDES SET UP & DELIVERY

Bill To:	Tiger Corporation 3301 N. Louise Ave. Sioux Falls SD 57107		
Ship to:	Serwe Implement LLC		
End User:	Town of Verona		
End User Contact:	Chris	PO#:	
Quote#:		Order Date:	
Dealer Contact:	Archie	Quote Date:	01/18/24
DLR Phone / Fax:	920-602-0938	Requested ship date:	
Dealer Email:	archie@serweinc.com	Sourcewell Contract #	070821-TGR
		Sourcewell Member #	
		Quote valid for	30 days



Please direct questions to:

Ph: 800-843-6849 EXT 3
email all quotes in excel format
to:orders@tigermowers.com

Shipping Instructic

BENGAL SERIES

(Boom Reach from 17.5' to 26.3')

HOW TO ORDER: You must select one item from Sections 1, 2, & 3 for a complete Boom Mower.

Qty	Order Code	Description	Approx. (lbs)	List Price	Disc	Sourcewell Price
Add tractor on next line when required						
1	John Deere 6145M	as per attached build		\$ 196,101	18%	\$ 160,802.82
SECTION 1 - Choose a Base Unit						
	BB-18	Mid-mount Boom Mower (1300 lb wheel weight)	3950	\$ 41,190	18%	\$ -
	BB-22	Mid-mount Boom Mower (1700 lb wheel weight)	4110	\$ 48,435	18%	\$ -
1	BB-24	Mid-mount Boom Mower (1700 lb wheel weight)	4250	\$ 53,614	18%	\$ 43,963.55
INCLUDES: Boom Arms, Mounting system, Wheel Weight, Mower Hydraulic Drive System, Operator Safety Screen/Poly, 3 Pt Open Stow System						
	3OS-BB-EXT	3OS Boomrest Extension Bracket	22	\$ 621	18%	\$ -
SECTION 2 - Choose a Cutter Head						
ROTARY						
	RT50D	50" Rotary head with Disk/Brush Knives & Hydraulic Door	815	\$ 17,872	18%	\$ -
	RT50B	50" Rotary Head with Blade Bar/Brush Knives & Hydraulic Door	740	\$ 17,689	18%	\$ -
	RT50G	50" Rotary head with Disk/Grass Knives & Hydraulic Door	815	\$ 17,824	18%	\$ -
	RT50D-SW	50" Rotary Swivel Head, Disk/Brush Knives & Hydraulic Door	950	\$ 18,433	18%	\$ -
	RT50B-SW	50" Rotary Swivel Head, Blade Bar/Brush Knives & Hyd Door	950	\$ 18,246	18%	\$ -
1	RT60B	60" Rotary Head with Blade Bar/Brush Knives & Hydraulic Door	840	\$ 20,766	18%	\$ -
	RT60B-SW	60" Rotary Swivel Head, Blade Bar/Brush Knives/Hyd Door - BB-22/24 ONLY	950	\$ 21,320	18%	\$ 17,482.40
	RT60DG	60" Rotary Head with Disk/Grass Knives & Hydraulic Door	915	\$ 20,961	18%	\$ -
FLAIL						
	FL50LGB	50" Flail Head with Light Brush/Grass Knives (LGB)	800	\$ 20,389	18%	\$ -
	FL50MBG	50" Flail Head with Medium Brush/Grass Knives (MBG)	808	\$ 21,462	18%	\$ -
	FL50HDB	50" Flail Head with Heavy Duty Brush Knives (HDB)	815	\$ 21,512	18%	\$ -
	FL63G	63" Flail Head with Grass Knives	855	\$ 20,961	18%	\$ -
MULCHER						
	ML36-BNGCHN	36" Mulcher Head with Quad Cut Teeth - Rear Chain	925	\$ 27,325	18%	\$ -
	ML36-BNGRUB	36" Mulcher Head with Quad Cut Teeth - Rear Rubber Flap	925	\$ 27,282	18%	\$ -
SECTION 3 - Choose a Hydraulic Controls Options						
	CBL	Cable Controls and Lift Valve Kit	78	\$ 7,569	18%	\$ -
1	JSTK	Joystick, Electro-hydraulic and Valve Kit	80	\$ 19,036	18%	\$ 15,609.65
SECTION 4 - Installation Charge						
	Factory Mnt	Installation of complete boom mower system		\$ 8,784	18%	\$ -
1	Field Mnt	Installation of complete boom mower system		\$ 8,784	18%	\$ 7,202.75
SECTION 5 - BOOM MOWER OPTIONS						
		Hydraulic Actuator in lieu of standard swivel - Verify tractor model	450	\$ 7,254	18%	\$ -
		Wheel Weight - up charge from 1300 to 1700 lbs of counter balance.	400	\$ 2,221	18%	\$ -
1		Wheel Weight - upcharge from 1700 to 2550 lbs of counter balance.	850	\$ 2,703	18%	\$ 2,216.43
1	AXSTAB HYD	Cylinder Axle Stabilizer Kit - Verify tractor model	55	\$ 1,951	18%	\$ 1,599.85
	AXSTAB TIMBREN	Timbren Axle Stabilizer Kit - Verify Tractor Model	25	\$ 606	18%	\$ -
	BPS-BNGL	Electronic Boom Positioning System	12	\$ 1,739	18%	\$ -
	P GUARD	Pump Guard	26	\$ 333	18%	\$ -
1	P/G GUARD	Pump/Grille Guard	39	\$ 683	18%	\$ 560.29
	06100615	Dogleg Kit, Flail Heads	13	\$ 658	18%	\$ -
	06103017	Dogleg Kit, Rotary & Mulcher Heads	13	\$ 658	18%	\$ -
	06200609	50" Blade Bar Kit (bar,knives,bolts,nuts)	75	\$ 1,188	18%	\$ -
	06200670	60" Blade Bar Kit (bar,knives,bolts,nuts)	85	\$ 1,296	18%	\$ -
	06744050	50" Rotary Disk Kit (knives,bolts,nuts,filter,grease) BRUSH	36	\$ 402	18%	\$ -
	06744051	50" Rotary Disk Kit (knives,bolts,nuts,filter,grease) GRASS	39	\$ 409	18%	\$ -
	06744040	50/60" Rotary Blade Bar Kit (knives,bolts,nuts,filter,grease) BRUSH	36	\$ 347	18%	\$ -
	06744001	60" Rotary Disk Kit (knives,bolts,nuts,filter,grease) GRASS	39	\$ 268	18%	\$ -
	06744005	50" Flail Parts Kit (knives,bolts,nuts,filter,clevis,belts) LBG FLAIL	32	\$ 891	18%	\$ -
	06744043	50" Flail Parts Kit (knives,bolts,nuts,filter,clevis,belts) MBG FLAIL	58	\$ 2,048	18%	\$ -
	06744044	50" Flail Parts Kit (knives,bolts,nuts,filter,clevis,belts) HDB FLAIL	55	\$ 1,997	18%	\$ -
	06744006	63" Flail Parts Kit (knives,bolts,nuts,filter,clevis,belts) GRASS	44	\$ 617	18%	\$ -
	06744086	Mulcher Knife Kit (knives,bolts - set of 30)	30	\$ 959	18%	\$ -
		Backup Alarm		\$ 612	18%	\$ -
		Radio, AM/FM Stereo,		\$ 448	18%	\$ -
ADDITIONAL OPTIONS FROM PRICE LIST						
1		Mulcher line kit for future use with Tiger Mulching head		\$ 1,800		\$ 1,800.00
1		Operator training and dealer prep		\$ 1,500		\$ 1,500.00
1		Delivery to end user		\$ 1,000		\$ 1,000.00
						\$ -
						\$ -
						\$ -
						\$ -
						\$ -
						\$ -
						\$ -
						\$ -
						\$ -
						\$ -

Freight is an estimate only, may change at time of shipment

Totals						\$ 253,737.74
TRACTOR INFORMATION REQUIRED:						
Make/Model:	John Deere 6145M	Transmission	Power quad 16x16	Cab Type	Yes	
Tire size	440/80R24 Block pattern 14 ply Front	2WD or MFWD	MFWD			
	480/80R38 Block pattern 14 ply Rear					

All prices are FOB Destination.
Prices are subject to change without notice.

Bengal 18,22,24

Your Summary

You have not selected a dealer.

\$196,101.00

 Total Suggested List Price *


6145M Cab Tractor

Photo is representative and will not reflect your configured product. Manufacturer's suggested price on base machine. Optional accessories and attachments as shown not included. Taxes, freight, setup, and delivery not included. See your dealer for available models, options, attachments and pricing. Product options and accessories may not be available in all regions. Prices listed are in USD.

Base Machine	Attachments & Accessories	Options	List Price, USD *
\$185,745.00	\$2,115.00	\$8,241.00	\$196,101.00

Options		Price
Options		
DESTINATION		
United States	0202	In Base Price
OPERATOR'S MANUAL		
English	0409	In Base Price
SHIPPING PREPARATION		
Shipment Preparation - by Ship Overseas		
Includes various steps such as: 1) Tractor is equipped with operator's manual etc. 2) All loose parts are removed or tied up (e.g. bolts, upper link, etc.)		
	7702	In Base Price
PACKAGE CONFIGURATIONS		
No package	0501	In Base Price
AUTOTRAC PACKAGES		
No AutoTrac™ Package	1801	In Base Price
TRANSMISSION		
PowrQuad™ PLUS 16F/16R - 30 km/h	1437	-\$2,803.00
OPERATOR'S STATION		
6M Cab - Economy Cab with RH Console		
Hand and foot throttle control including 2 engine set speed controls		
Includes In addition to Base Cab: Includes "Standard Seat" with air suspension. Mirrors Manually Adjustable and Telescopic- LH & RH (Code 2511) Rear Window Wiper & Washer (Code 8280) Cup Holder (Code 878S) USB Charging Socket (Code 8788)		
	2084	\$2,915.00
SEAT		
Standard Seat		
Mechanical lumbar support, fore-/aft-suspension.		
Air suspended, with operator presence switch.		
Grammer seat MSG 95G with 731 seat top.		
	2142	No Added Cost

GREENSTAR™ AND AUTOTRAC™**No ISOBUS Ready / GreenStar™ Ready**

1755 In Base Price

RECEIVER HARDWARE**Less Receiver**

1880 In Base Price

DISPLAY HARDWARE**Less Display**

1900 In Base Price

DISPLAY APPLICATION**Less Application**

1950 In Base Price

CONNECTIVITY HARDWARE**JDLink™ Modem**

Includes integrated cab wiring harness, high performance antenna, JDLink™ R Modem - 4G capable and ethernet harness. Ethernet harness may vary per machine configuration. JDLink™ connectivity can be enabled in John Deere Operations Center. Connectivity service is subject to country availability. JDLink™ connectivity links you to your work and results, your team, your advisors, your dealer, and your equipment. See Ag Sales Manual for details.

183E In Base Price

CONNECTIVITY SUBSCRIPTION**Less Subscription**

185A In Base Price

Attachments & Accessories
Factory-Installed Attachments
\$2,115.00*Price***CAB EQUIPMENT****Backup Alarm**

Safety alarm for reverse.

8782 \$713.00

STEERING AND BRAKES**Heavy Duty Rear Wheel Brakes**

Increased disc brake thickness (+20%) to ensure higher braking capacity (designed for transport with non-braked trailers).

8763 \$190.00

LIGHTING**Beacon Light**

Front cab roof mounted.

8725 \$313.00

FRONT POWER TAKE-OFF (PTO)**Preparation for Front Auxiliary Drive**

Includes torsion damper and belt pulley.

8380 \$899.00

* Manufacturer's suggested list price shown. Retail prices may vary by dealer. Unless stated otherwise, taxes, freight, setup, delivery and other dealer specific charges not included in the pricing. Options noted with 'Net Item Charge' will have additional costs. Pricing and specifications subject to change without notice. Special program pricing may be available on certain models. Ask dealer for details. Prices shown are in U.S. dollars and valid only in the United States.

** Accessories noted with 'Contact Dealer', 'In Catalog' or 'Net Item Charge' will have additional costs. Please see dealer for details.

SAMPLE PAYBACK SCHEDULE
Based on 213 hours per year usage

1/18/2024

wcb

**Boom Mower Rental cost
2024-2034**

**Boom Mower Purchase cost
2024-2034**

Annual Rental Cost			Annual Operation cost			Annual Operation cost			Annual Operation cost			Annual Operation cost					
Year	Cost	Note	Year	cost	Note	Year	cost	Note	Year	cost	Note	Year	cost	Note			
2024	\$25,600	includes fuel and consumables	2024	\$100,000	Purchase Price	2024	\$150,000	Purchase Price	2024	\$180,000	Purchase Price	2024	\$200,000	Purchase Price	2024	\$260,000	Purchase Price
2025	\$26,368		2025	\$2,000	Fuel, consumables, repairs	2025	\$2,000	Fuel, consumables, repairs	2025	\$2,000	Fuel, consumables, repairs	2025	\$2,000	Fuel, consumables, repairs	2025	\$2,000	Fuel, consumables, repairs
2026	\$27,159		2026	\$2,060		2026	\$2,060		2026	\$2,060		2026	\$2,060		2026	\$2,060	
2027	\$27,974		2027	\$2,122		2027	\$2,122		2027	\$2,122		2027	\$2,122		2027	\$2,122	
2028	\$28,813		2028	\$2,185		2028	\$2,185		2028	\$2,185		2028	\$2,185		2028	\$2,185	
	\$135,914			\$108,367	Pay Back		\$168,367			\$188,367			\$208,367			\$268,367	
2029	\$29,677		2029	\$2,251		2029	\$2,251		2029	\$2,251		2029	\$2,251		2029	\$2,251	
2030	\$30,568		2030	\$2,319		2030	\$2,319	Pay Back	2030	\$2,319		2030	\$2,319		2030	\$2,319	
	\$196,169			\$112,937			\$162,937			\$195,325	Pay Back		\$212,937			\$272,937	
2031	\$31,485		2031	\$2,388		2031	\$2,388		2031	\$2,460		2031	\$2,388	Pay Back	2031	\$2,388	
2032	\$32,429		2032	\$2,460		2032	\$2,460		2032	\$2,534		2032	\$2,460		2032	\$2,460	
2033	\$33,402		2033	\$2,534		2033	\$2,534		2033	\$2,610		2033	\$2,534		2033	\$2,534	
2034	\$34,404		2034	\$2,610		2034	\$2,610		2034	\$2,688		2034	\$2,610		2034	\$2,610	Pay Back
	\$327,880			\$122,928			\$172,928			\$205,616			\$222,928			\$282,928	

SAMPLE PAYBACK SCHEDULE
Based on 80 hours per year usage

1/18/2024

wcb

Boom Mower Rental cost 2024-2040			Boom Mower Purchase cost 2024-2040														
Year	Annual Rental Cost	Note	Year	Annual Operation cost	Note	Year	Annual Operation cost	Note	Year	Annual Operation cost	Note	Year	Annual Operation cost	Note	Year	Annual Operation cost	Note
2024	\$9,000	includes fuel and consumables	2024	\$100,000	Purchase Price	2024	\$150,000	Purchase Price	2024	\$180,000	Purchase Price	2024	\$200,000	Purchase Price	2024	\$260,000	Purchase Price
2025	\$9,270		2025	\$2,000	Fuel, consumables, repairs	2025	\$2,000	Fuel, consumables, repairs	2025	\$2,000	Fuel, consumables, repairs	2025	\$2,000	Fuel, consumables, repairs	2025	\$2,000	Fuel, consumables, repairs
2026	\$9,548		2026	\$2,060		2026	\$2,060		2026	\$2,060		2026	\$2,060		2026	\$2,060	
2027	\$9,835		2027	\$2,122		2027	\$2,122		2027	\$2,122		2027	\$2,122		2027	\$2,122	
2028	\$10,130		2028	\$2,185		2028	\$2,185		2028	\$2,185		2028	\$2,185		2028	\$2,185	
	\$47,782			\$108,367			\$158,367			\$188,367			\$208,367			\$268,367	
2029	\$10,433		2029	\$2,251		2029	\$2,251		2029	\$2,251		2029	\$2,251		2029	\$2,251	
2030	\$10,746		2030	\$2,319		2030	\$2,319		2030	\$2,319		2030	\$2,319		2030	\$2,319	
	\$68,962			\$112,937			\$162,937			\$195,325			\$212,937			\$272,937	
2031	\$11,069		2031	\$2,388	Pay Back	2031	\$2,388		2031	\$2,460		2031	\$2,388		2031	\$2,388	
2032	\$11,401		2032	\$2,460		2032	\$2,460		2032	\$2,534		2032	\$2,460		2032	\$2,460	
2033	\$11,743		2033	\$2,534		2033	\$2,534		2033	\$2,610		2033	\$2,534		2033	\$2,534	
2034	\$12,095		2034	\$2,610		2034	\$2,610		2034	\$2,688		2034	\$2,610		2034	\$2,610	
	\$115,270			\$122,928			\$172,928			\$205,616			\$222,928			\$282,928	
2035	\$12,458		2035	\$2,688		2035	\$2,688		2035	\$2,768		2035	\$2,688		2035	\$2,688	
2036	\$12,832		2036	\$2,768		2036	\$2,768		2036	\$2,852		2036	\$2,768		2036	\$2,768	
2037	\$13,217		2037	\$2,852		2037	\$2,852		2037	\$2,937		2037	\$2,852		2037	\$2,852	
2038	\$13,613		2038	\$2,937		2038	\$2,937		2038	\$3,025		2038	\$2,937		2038	\$2,937	
2039	\$14,022		2039	\$3,025		2039	\$3,025		2039	\$3,116		2039	\$3,025		2039	\$3,025	
2040	\$14,442		2040	\$3,116		2040	\$3,116	Pay Back	2040	\$3,209		2040	\$3,116		2040	\$3,116	
	\$195,854			\$140,314			\$190,314			\$223,523			\$240,314			\$300,314	

AGREEMENT BETWEEN THE TOWN OF MIDDLETON AND THE TOWN OF VERONA FOR SHARED ROAD MAINTENANCE

This Agreement made between the Town of Middleton (“Middleton” or “TOM”), Dane County, Wisconsin, and the Town of Verona (“Verona” or “TOV”), Dane County, Wisconsin, collectively, the “Parties,” effective this ____ day of _____, 2024.

WHEREAS, Middleton and Verona share certain roads that lie within both Middleton and Verona; and

WHEREAS, Middleton and Verona, in the interest of efficient operations in each Town, also have undertaken responsibility for the maintenance of roads that lie within each other’s jurisdiction and wish to continue to do so;

THEREFORE, in consideration of the following rights and covenants, Middleton and Verona do agree as follows:

- Each party shall maintain the sections of the following roads as described below:

Road Segment	Road Name	Starting Point	End Point	Owner	Responsible Party Plowing	Responsible Party Mowing	Responsible Party Road Maintenance
1	Mid-Town Road	Lower Badger Mill Creek Bridge	Meadow Road	Shared	TOV	TOM	Shared
2	Mid-Town Road	Meadow Road	Mound View Road	Shared	TOV	TOM: northside of road TOV: southside of road	Shared
3	Timber Lane Road	TOM line	Mid-Town Road	TOV	TOM	TOM	TOV

NOTE: Mid-Town Road Shared Ownership – Eastbound Lane TOV; Westbound Lane TOM

2. The responsible party designated in paragraph 1 above shall furnish the labor and material for snowplowing (including salting and sanding) and the responsible party designated in paragraph 1 above shall furnish the labor and material for mowing (including brushing). The responsible party designated in paragraph 1 above shall furnish the labor and material for the purpose of performing maintenance work that includes all other customary and usual town road repair and maintenance including but not limited to patching, crack filling, and chip sealing. The responsible party designated in paragraph 1 above shall furnish labor for replacement of traffic signs with the cost of the signs to be split 50/50 between municipalities.

3. Each party shall have the right to claim each segment of road designated in Paragraph 1 above for General Transportation Aids purposes to the same extent it claimed such road segment in 2022. In the event either party is required to claim any road segment for General Transportation Aids purposes for any reason in conflict with this paragraph, any such aid or funds received by the party shall be remitted to the other party within thirty (30) days of receipt of such aid or funds.

- This Agreement shall continue unless modified in writing by the parties hereto.

5. In the event either party is notified of or becomes aware of any deficiencies in the performance of snowplowing, mowing or maintenance on any portion of any road designated in paragraph 1 above that is the responsibility of the other party as to such snowplowing, mowing or maintenance, or if either party is notified of deterioration/dangerous road conditions requiring repair or attention, the party shall report the deficiency or condition to:

For Verona: Town Public Works Director
For Middleton: Town Crew Leader

6. By executing this Agreement, the Parties acknowledge, warrant and represent that each is entering this Agreement freely and voluntarily and that each has had the opportunity to obtain such legal and other counsel as each deems necessary and prudent.

7. This Agreement contains the entire understanding between the Parties on the subject matter hereof and no representations, inducements, promises or agreements, oral or otherwise, not included herein shall be of any force or effect, and this Agreement supersedes any other oral or written agreements entered into between the Parties on the subject matter herein. To be effective, any and all modifications must be in writing.

8. No delay or omission by either party in exercising any right or power arising out of any default under any of the terms or conditions of this Agreement shall be construed to be a waiver of the right or power. A waiver by a party of any of the obligations of the other Party shall not be construed to be a waiver of any breach of any other terms or conditions of this Agreement.

9. If any term or condition of this Agreement, or the application of this Agreement to any person or circumstance, shall be deemed invalid or unenforceable, the remainder of this Agreement, or the application of the term or condition to persons or circumstances other than those to which it is held invalid or unenforceable, shall not be affected thereby, and each term and condition shall be valid and enforceable to the fullest extent permitted by law. This Agreement shall be construed and enforced in accordance with the internal laws of the State of Wisconsin.

10. Nothing contained in this Agreement shall create a contractual relationship with or a cause of action in favor of a third party against either Middleton or Cross Plains.

Dated this ____ day of _____, 2024.

TOWN OF MIDDLETON:

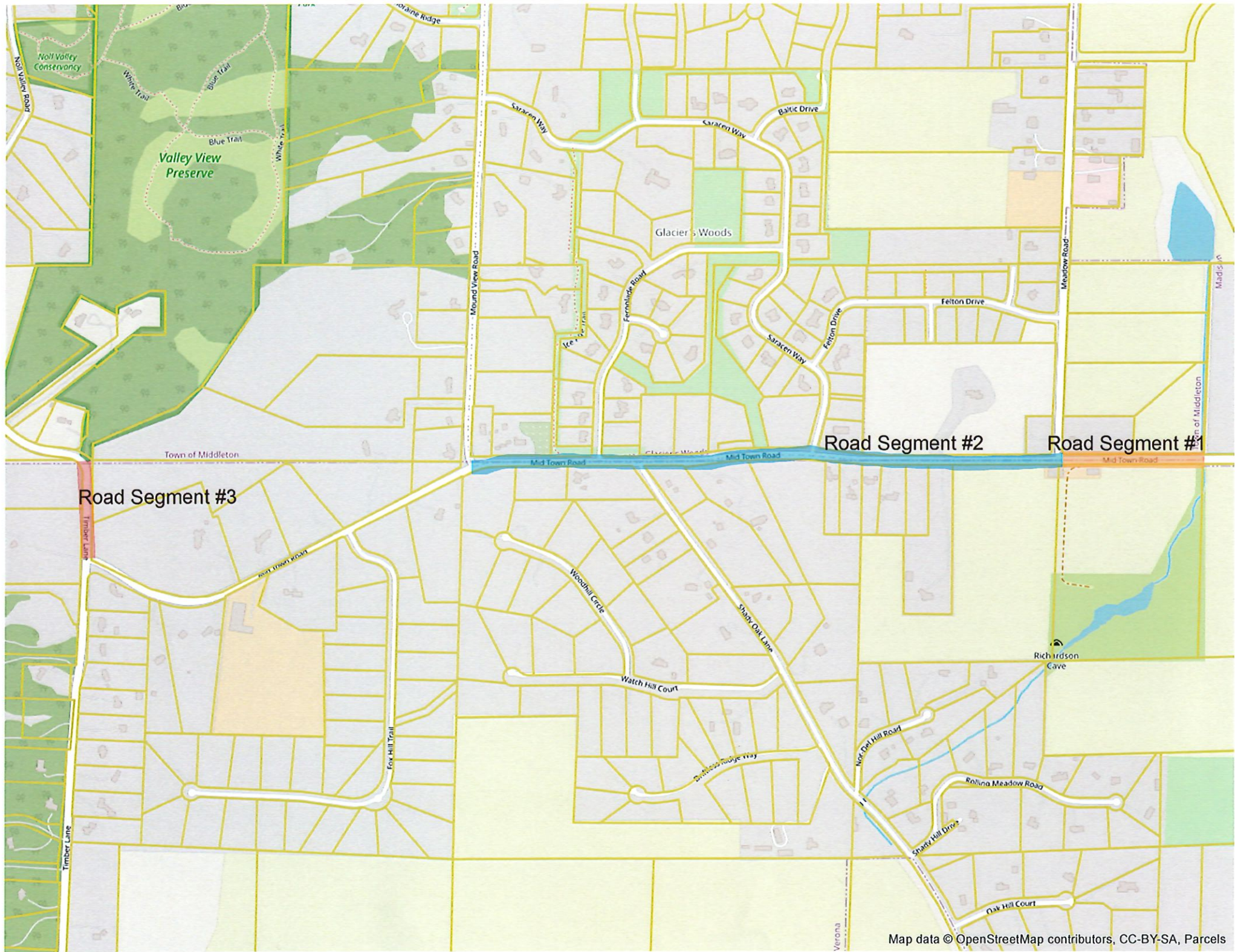
By: _____
Cynthia L. Richson, Town Chair

By: _____
Barbara Roesslein, Town Clerk

TOWN OF VERONA:

By: _____
Mark Keller, Town Chair

By: _____
Teresa Withee, Town Clerk/Treasurer



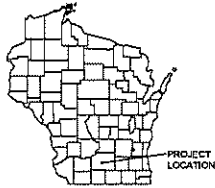
Road Segment #3

Road Segment #2

Road Segment #1

2024 ROADWAY MAINTENANCE

TOWN OF VERONA DANE COUNTY, WISCONSIN



SHEET INDEX

- G - GENERAL SHEETS**
 G 1 TITLE SHEET
- R - ROAD CONSTRUCTION PLANS**
 R 1 PROJECT A: SUNSET DRIVE - EAST
 R 2 PROJECT B: SUNSET DRIVE - WEST
 R 3 PROJECT C: RANGE TRAIL
 R 4 PROJECT D: DAVID HILLS DRIVE
 R 5 PROJECT E: SHADY BEND

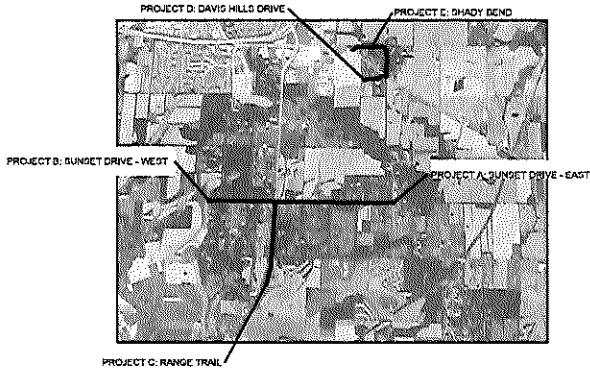
UTILITIES

DAVE'S ELECTRIC
 ALLIANT ENERGY
 2147 COUNTY ROAD PB
 VERONA, WI 53593
 CONTACT: JEFF MCLEOD
 (800) 845-1148

MADISON GAS & ELECTRIC
 123 MADISON STREET
 MADISON, WI 53703
 CONTACT: EMERGENCY
 GAS: (888) 262-1111
 ELECTRIC: (800) 242-7111

TELEPHONE
 TPO TELECOM
 826 JUNCTION ROAD
 MADISON, WI 53717
 CONTACT: SHANE DORGAN
 (608) 854-1469

SANITARY SERVICE
 TOWN OF VERONA
 1809 ETH RD
 VERONA, WI 53593
 CONTACT: CHRISTOPHER
 BARNES
 (608) 861-4471



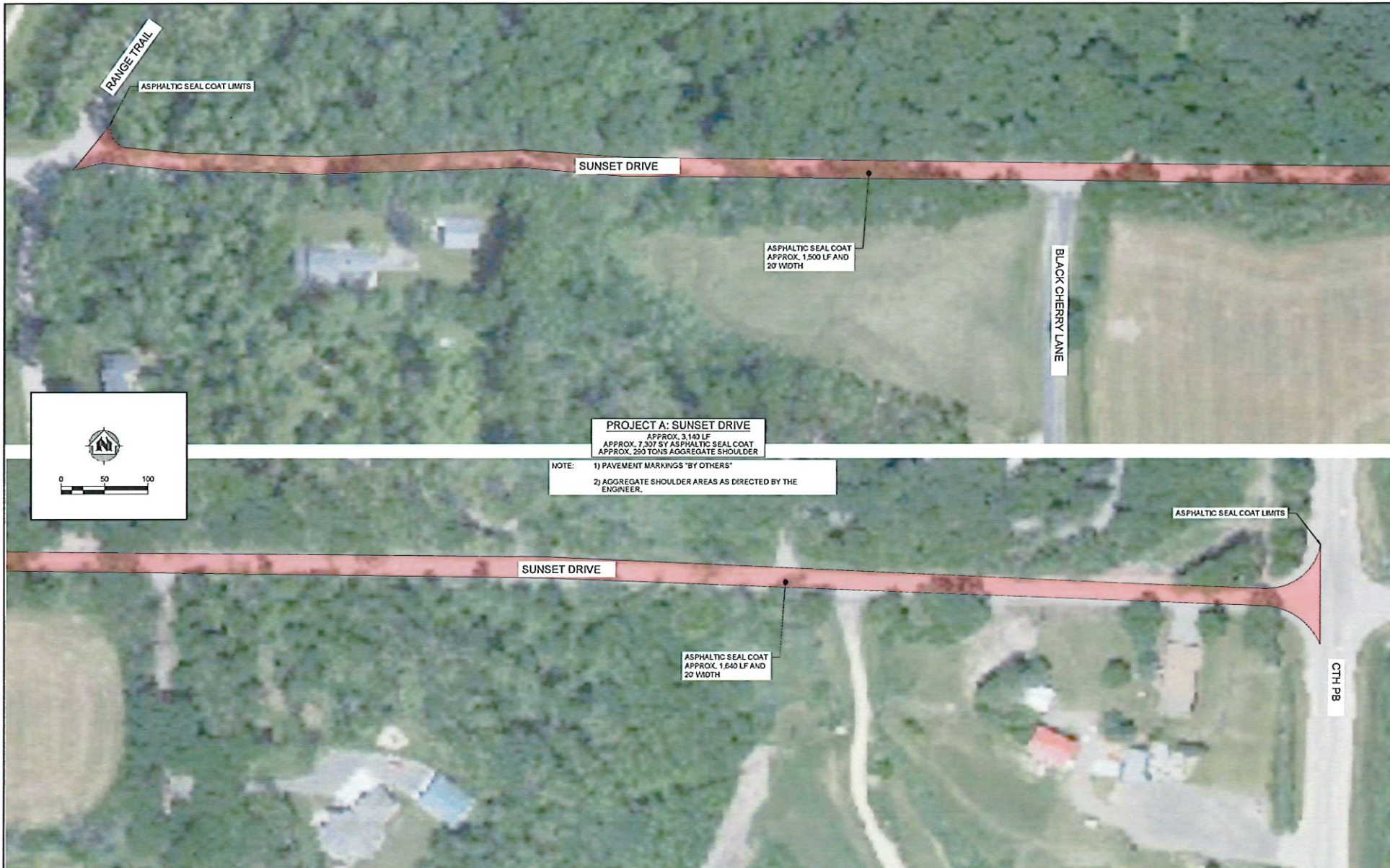
LOCATION MAP
 NOT TO SCALE



Dial 811 or (800) 242-8511
www.DiggersHotline.com

NOTE:
 UTILITY LOCATIONS SHOWN ON PLANS ARE APPROXIMATE AND CONTRACTOR
 SHALL HAVE APPROPRIATE UTILITY MARK EXACT LOCATIONS PRIOR TO
 CONSTRUCTION.

<table border="1"> <tr> <td>DATE</td> <td>DESCRIPTION</td> </tr> <tr> <td>12/15/2023</td> <td>ISSUED FOR PERMITTING</td> </tr> <tr> <td>01/10/2024</td> <td>ISSUED FOR CONSTRUCTION</td> </tr> </table>		DATE	DESCRIPTION	12/15/2023	ISSUED FOR PERMITTING	01/10/2024	ISSUED FOR CONSTRUCTION	<p>PRELIMINARY</p>		<p>2024 ROADWAY MAINTENANCE TOWN OF VERONA DANE COUNTY, WISCONSIN</p>	<p>TITLE SHEET</p>	<p>PROJECT NO. 202310040</p>
DATE	DESCRIPTION											
12/15/2023	ISSUED FOR PERMITTING											
01/10/2024	ISSUED FOR CONSTRUCTION											



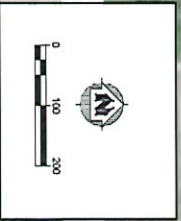
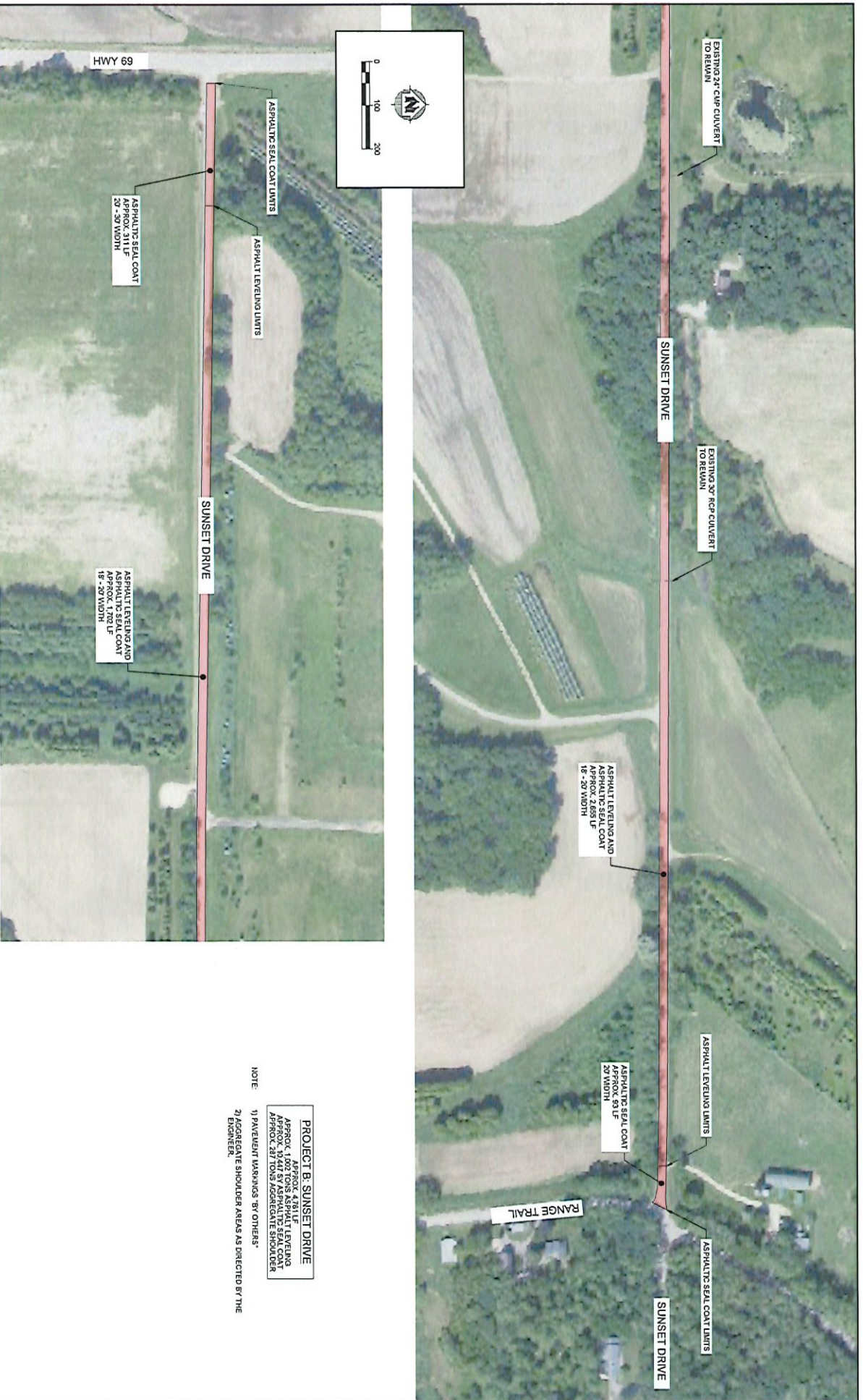
PROJECT DATE	DESIGN BY	NO.	DATE	REVISION	BY
	TAM	-	-	PRELIMINARY	-
	TAM	-	-		-
	RM	-	-		-

MSA ENGINEERING | ARCHITECTURE | SURVEYING
 PLANNING | ENVIRONMENTAL
 3723 PARKWAY IN MADISON, WI 53704
 (608) 242-7779 www.msa-gs.com
 © MSA Professional Services, Inc.

2024 ROADWAY MAINTENANCE
 TOWN OF VERONA
 DANE COUNTY, WISCONSIN

SUNSET DRIVE - EAST

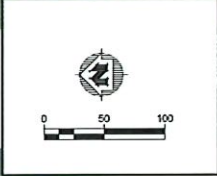
PROJECT NO.
00376040
 SHEET
R1



PROJECT B: SUNSET DRIVE
 APPROX. 4781 LF
 APPROX. 1002 TONS ASPHALT LEVELING
 APPROX. 1702 LF
 APPROX. 287 TONS AGGREGATE SHOULDER

NOTE:
 1) PAVEMENT MARKINGS BY OTHERS
 2) AGGREGATE SHOULDER AREAS AS DIRECTED BY THE ENGINEER.

PROJECT NO.	DATE	NO.	DATE
DESIGNED BY	DATE	REVISED BY	DATE
PRELIMINARY			
MSA			
ENGINEERING ARCHITECTURE & SURVEYING 1077 W. STATE STREET, SUITE 200 MADISON, WISCONSIN 53703 (608) 233-7777			
2024 ROADWAY MAINTENANCE		SUNSET DRIVE - WEST	
TOWN OF VERONA		DANE COUNTY, WISCONSIN	
		PROJECT NO. 00376040 SHEET NO. R2	



PROJECT C: RANGE TRAIL

APPROX. 2,800 LF
 APPROX. 6,608 SY ASPHALTIC SEAL COAT
 APPROX. 53 SY AREA CRACK CONTROL
 APPROX. 95 TONS AGGREGATE SHOULDER

- NOTE: 1) PAVEMENT MARKINGS "BY OTHERS"
 2) AGGREGATE SHOULDER AREAS AS DIRECTED BY THE ENGINEER.

PROJECT DATE	NO.	DATE	REVISION	BY
	1			



ENGINEERING | ARCHITECTURE | SURVEYING
 PLANNING | ENVIRONMENTAL
 1701 PARKWAY ST. MADISON, WI 53704
 (608) 242-7779 www.msa-us.com

2024 ROADWAY MAINTENANCE
 TOWN OF VERONA
 DANE COUNTY, WISCONSIN

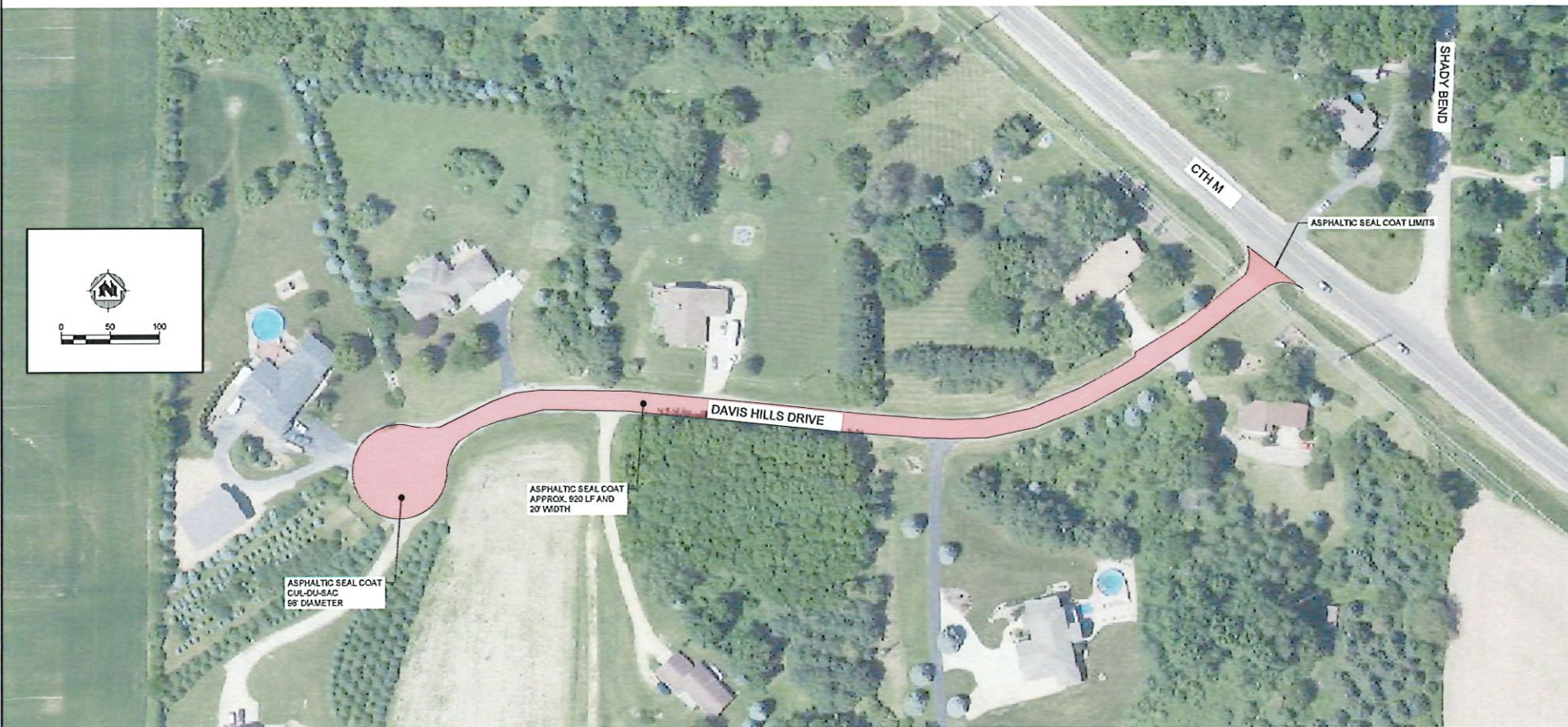
RANGE TRAIL

PROJECT NO.
 00376040
 SHEET
 R3

PROJECT DATE: 1/19/2024 4:12 PM G:\00376040\2024\CONTRACTOR\Roadway Maintenance Project\00376040\PROJECT C\VIEWER.dwg

PROJECT D: DAVIS HILLS DRIVE
 APPROX. 1,040 LF
 APPROX. 2,618 SY ASPHALTIC SEAL COAT
 APPROX. 62 SY AREA CRACK CONTROL

NOTE: 1) PAVEMENT MARKINGS "BY OTHERS"
 2) AGGREGATE SHOULDER AREAS AS DIRECTED BY THE ENGINEER.



PROJECT DATE	NO.	DATE	REVISION
	DESIGNED BY	TAM	
	CHECKED BY	SH	

PRELIMINARY

MSA ENGINEERING | ARCHITECTURE | SURVEYING
 PLANNING | PLANNING | ENVIRONMENTAL
 3701 Parkside Dr. Madison, WI 53704
 (608) 242-7779 www.msa-ps.com

2024 ROADWAY MAINTENANCE
 TOWN OF VERONA
 DANE COUNTY, WISCONSIN

DAVIS HILLS DRIVE

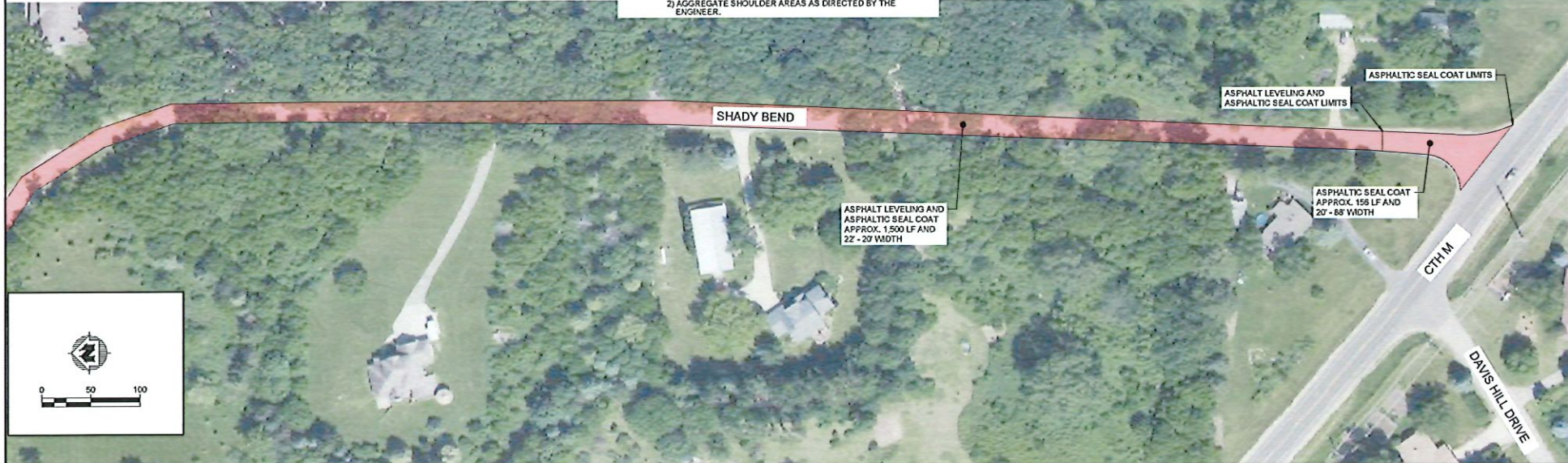
PROJECT NO.
00376040
SHEET
R4

PLOT DATE: 1/9/2024 12:12 PM, 9:40:00 AM 1920170400450070324 Roadway Maintenance Project00376040 PROJECT C:\E\VERA.Avg



PROJECT E: SHADY BEND
 APPROX. 3,275 LF
 APPROX. 7,376 SY ASPHALTIC SEAL COAT
 APPROX. 636 TONS ASPHALT LEVELING
 APPROX. 213 TONS AGGREGATE SHOULDER

NOTE:
 1) PAVEMENT MARKINGS "BY OTHERS"
 2) AGGREGATE SHOULDER AREAS AS DIRECTED BY THE ENGINEER.



PROJECT DATE: _____	DRAWN BY: TAM	NO.:	DATE:	REVISION:	BY:	<p>ENGINEERING ARCHITECTURE SURVEYING PLANNING PLANNING ENVIRONMENTAL 3723 FARMERS ST. MADISON, WI 53704 (608) 242-7779 www.msa-gs.com <small>© 2024 Professional Services, Inc.</small></p>	2024 ROADWAY MAINTENANCE TOWN OF VERONA DANE COUNTY, WISCONSIN	SHADY BEND	PROJECT NO: 00376040
	DESIGNED BY: TAM								SHEET R5
	CHECKED BY: JH								
PRELIMINARY									

PLOT DATE: 1/9/2024 4:12 PM, G:\00376040\00376040\2024\Roadway Maintenance Project\00376040 PROJECT OVERVIEW.dwg

Project Quantities

Section Title	Line Item	Item Description	UofM	Quantity	Unit Price	Extension
PROJECT A : Sunset Drive (SR 69 to Range Trail)						
		Mobilization/ Bonds/ Insurance	LS	1	\$150.00	\$150.00
		Traffic Control	LS	1	\$400.00	\$400.00
		Asphaltic Seal Coat	SY	10447	\$2.30	\$24,028.10
		HMA Leveling Course, 5LT	TON	1002	\$100.00	\$100,200.00
		Sign Installation	EA	3	\$200.00	\$600.00
		Aggregate Shoulder 3/4-Inches	TON	290	\$35.00	\$10,150.00
Total Project A						\$135,528.10
PROJECT B : Sunset Drive (Range Trail to CTH PB)						
		Mobilization/ Bonds/ Insurance	LS	1	\$150.00	\$150.00
		Traffic Control	LS	1	\$200.00	\$200.00
		Asphaltic Seal Coat	SY	7307	\$2.30	\$16,806.10
		Area crack filling	SY	128	\$40.00	\$5,120.00
		Sign Installation	EA	4	\$200.00	\$800.00
		Aggregate Shoulder 3/4-Inches	TON	100	\$35.00	\$3,500.00
Total Project B						\$26,576.10
PROJECT C : Range Trail (South End to Sunset Drive)						
		Mobilization/ Bonds/ Insurance	LS	1	\$150.00	\$150.00
		Traffic Control	LS	1	\$200.00	\$200.00
		Asphaltic Seal Coat	SY	6698	\$2.30	\$15,405.40
		Area crack filling	SY	53	\$40.00	\$2,120.00
		Sign Installation	EA	8	\$200.00	\$1,600.00
		Aggregate Shoulder 3/4-Inches	TON	95	\$35.00	\$3,325.00
Total Project C						\$22,800.40
PROJECT D : Shady Bend (CTH M to CTH M)						
		Mobilization/ Bonds/ Insurance	LS	1	\$150.00	\$150.00
		Traffic Control	LS	1	\$400.00	\$400.00
		Asphaltic Seal Coat	SY	7376	\$2.30	\$16,964.80
		HMA Leveling Course, 5LT	TON	636	\$100.00	\$63,600.00
		Sign Installation	EA	4	\$200.00	\$800.00
		Aggregate Shoulder 3/4-Inches	TON	213	\$35.00	\$7,455.00
Total Project D						\$89,369.80
PROJECT E : Davis Hills Drive (CTH M to End)						
		Mobilization/ Bonds/ Insurance	LS	1	\$150.00	\$150.00
		Traffic Control	LS	1	\$200.00	\$200.00
		Asphaltic Seal Coat	SY	2918	\$2.30	\$6,711.40
		Area crack filling	SY	62	\$40.00	\$2,480.00
Total Project E						\$9,541.40
PROJECT F : Flint Lane (379 feet south to End)						
		HMA Surface Course, 4LT	TON	235	\$100.00	\$23,500.00
Total Project F						\$23,500.00

Work Subtotal	\$307,315.80
Work by other (embankment on Sunset)	\$6,120.00
Decker Signs	\$4,000.00
MSA Engineering	\$9,000.00
Dane County Striping	\$4,000.00
Total Project	\$330,435.80
Budget	\$347,688.00
Net	\$17,252.20

Chris Barnes

From: Mike Duerst
Sent: Friday, January 5, 2024 5:41 PM
To: Chris Barnes
Subject: Fwd: Public Works Committee Agenda: Options for Brush from Right of Way

Sent from my iPad

Begin forwarded message:

From: Tom Mathies <TMathies@town.verona.wi.us>
Date: January 5, 2024 at 1:31:02 PM CST
To: Mike Duerst <MDuerst@town.verona.wi.us>
Cc: Chris Barnes <CBarnes@town.verona.wi.us>
Subject: **Public Works Committee Agenda: Options for Brush from Right of Way**

Hi Mike,

For the Public Works Committee meeting would you please include an agenda item to discuss how to deal with brush collected from town road right of way?

One option is to use the county landfill:

Brush & Log Drop Off for clean logs, branches and wood chips. These are made into wood chips for landscaping, animal bedding and other uses. We cannot accept yard waste, soil, or other organic debris.

<https://landfill.countyofdane.com/services/recycling>

Dane County Ordinances Chapter 41 says the fee is \$40/ton:

Material — Fee (per ton)
Construction and Demolition — \$54.00
For Recycling Tires — \$275.00
Clean logs, branches & brush — \$40.00
Clean wood chips — \$25.00
Asphalt Shingles — \$54.00

<https://countyofdane.com/documents/pdf/ordinances/ch041.pdf>

The Town of Cottage Grove uses Purple Cow so that is another possibility. I think the Town of Middleton also uses Purple Cow.

Thanks,

TOWN OF VERONA

TO: Town Board of Supervisors

DATE: January 18, 2024

FROM: W. Christopher Barnes, Public Works Director

SUBJECT: Brush Disposal Options

Brush Disposal Options

Since the construction of the new town office and public works garage, the town has collected and burned debris from road ROW tree removal, brush trimming and roadway tree trimming. Burning has been done on-site at the Town Hall under a statewide burning permit. In 2019 the town was informed that a municipal operation is required to have a more comprehensive wood burning facility license. The requirements for a municipal wood burning facility entail a much larger and secure site than the current burn area located at the town facility site. Requirements include a gravel pad area for the actual burn area, a 100 square feet clear fire area perimeter and fenced and locked access. Consequently, staff has reviewed other options for ultimate brush disposal.

Establish a Wood Burning Facility

This option consists of establishing a suitable wood burning area to meet WDNR requirements including a 100-foot setback, gravel burn area, fence and locked gate, and 1000-foot setback from highways, parks or residences. Since the current town facilities do not have enough space to accommodate the required setbacks, another location would need to be identified and purchased/leased. As of this date, it is unclear whether the town could apply for, or be granted, any type of variance from the state requirements. The costs to construct a burn facility suitable for town use is estimated to cost \$150,000 for the purchase of a 2-acre minimum site and \$75,000 for construction.

Pros: Continues the existing operation. Provides on-site disposal of collected brush without further transport or handling.

Cons: Requires lease or purchase of suitable 2-acre minimum site along with significant site preparation costs. Future requirements for burning will likely become more stringent.

Annual Cost (approx.): \$500 ashes disposal

Collection and Storage at Public Works Site and removal by Contract

This option consists of the continued collection of brush/wood debris, storing at the town site and contracting with a company to remove and dispose of the brush by a means of their choosing. Brush would continue to be collected from the brushing operation and deposited in the concrete bin area by the public works garage. The bin would be emptied by contractor and they would be responsible for disposing of the brush.

Pros: No additional property required, maintains current practice for storing material on-site. No additional permitting or approvals required. Woodchips or brush would be removed by a contractor.

Cons: Contract removal will need to be performed numerous times a year to keep the brush storage bin usable.
May need to create a new storage area if brush collection volume increase

Annual Cost (approx.): \$26,000 (\$5200 per removal)

Collection and Transport to Purple Cow Organics or Dane County Landfill for processing

This option consists of outsourcing brush disposal after collection by the town staff. Brush would be collected and transported directly to the Dane County/Purple Cow Organics facility on Meyer Road as needed.

Pros: No additional property required, maintains current practice for storing material on-site. No additional permitting or approvals required

Cons: Considerable downtime for town staff to drive to the Purple Cow facility to unload in addition to the \$40/ton tipping fee. Decreased productivity and additional vehicle use for crew to transport brush.
May need to hire additional trucking capacity.

Annual Cost (approx.): \$ 20,000

Leave cut brush in the right of way by chipping or attempt to mulch during mowing operations

This option consists of just leaving small brush in the right way where it has been cut or chipping brush and leaving chips in the right of way. Would still require some larger tree trunks to be removed for safety reasons.

Pros: Least costly option. Requires very little trucking of tree debris. Chips could be left in the right of way or blown into a truck for other uses.

Cons: Cost to rent chipper is approximately \$2,800/week. Residents will be opposed to leaving unchipped brush or chips in front of their property.

Annual Cost (approx.): \$8,500 chipper rental

As environmental requirements become more restrictive, the requirements for maintaining a compliant burn facility will likely increase and pressures from increased development may reduce the public acceptance of burning brush.

Attachments

Cc Sarah Gaskell, Planner/Administrator

**INTERGOVERNMENTAL AGREEMENT
BETWEEN THE CITY OF FITCHBURG AND THE TOWN OF VERONA**

THIS AGREEMENT is entered into on this ____ day of _____, 2024, by and between the City of Fitchburg, a Wisconsin Municipal Corporation, hereinafter referred to as the "City" and the Town of Verona, a body corporate and politic, hereinafter referred to as the "Town."

WITNESSETH:

WHEREAS, Section 66.0301 of the Wisconsin Statutes, authorizes cities, villages, towns, counties, and other public agencies to enter into agreements for the receipt and furnishing of services; and,

WHEREAS, the Town and the City determined the need to redesign Fitchrona Road between Tonto Trail and Nesbitt Rd (hereinafter referred to as the 'Design'); and

WHEREAS, the City has selected a "Consultant" to complete the Design;

NOW, THEREFORE, the parties hereby agree as follows:

- 1) The City shall enter into a contract with the Consultant for the preparation of the Design. As used in this Agreement, the term "Design" shall include all of the services listed in the Request for Proposal, see Exhibit A. The City has designated a project manager to oversee the Design preparation and shall be the designated contact with the consultant.
- 1) City shall pay the entire cost charged by the Consultant for the engineering services for the project.
- 2) The total cost to City for the engineering services provided by the Consultant shall not exceed \$444,900 unless this agreement is modified by addendum.
- 3) The total cost to the Town for the engineering services provided by the Consultant shall not exceed \$33,500 unless this agreement is modified by addendum.
- 4) The City shall bill the Town for the Town's seven percent (7%) of the total cost of the work as the work progresses for work completed. The Town shall reimburse the City for its share of the engineering service fees for the Design within forty-five (45) days of receiving a billing from the City. Past due balances shall be subject to a service charge at the rate of 1% (one percent) per month.
- 5) Liability. Each party shall be responsible for the consequences of its own acts or omissions and those of its employees, boards, commission, agencies, officers, and representatives and be responsible for losses, claims and liabilities which are attributed to such acts or omissions.
- 6) Non-Discrimination. In the performance of services under the Agreement, each party agrees to abide by its own equal employment and Affirmative Action requirements.
- 7) This Agreement is intended to benefit the parties hereto and their respective officials and shall not be construed to create any right or benefit on behalf of any person, firm,

IN WITNESS WHEREOF the City of Fitchburg and the Town of Verona have executed this agreement effective as of the date when all parties hereto have affixed their respective signatures.

TOWN OF VERONA

BY: _____
Mark Geller Date
Town Chairman

BY: _____
Teresa Withee Date
Town Clerk

CITY OF FITCHBURG

BY: _____
Julia Arata-Fratta Date
Mayor

Tracy Oldenburg Date
City Clerk

Road Impact Look Ahead

1. December 2023 - February 2024
Road Work Paused

2. Current - April
Utility Work
No Lane or Road Closures, Construction
Vehicles Entering and Exiting

